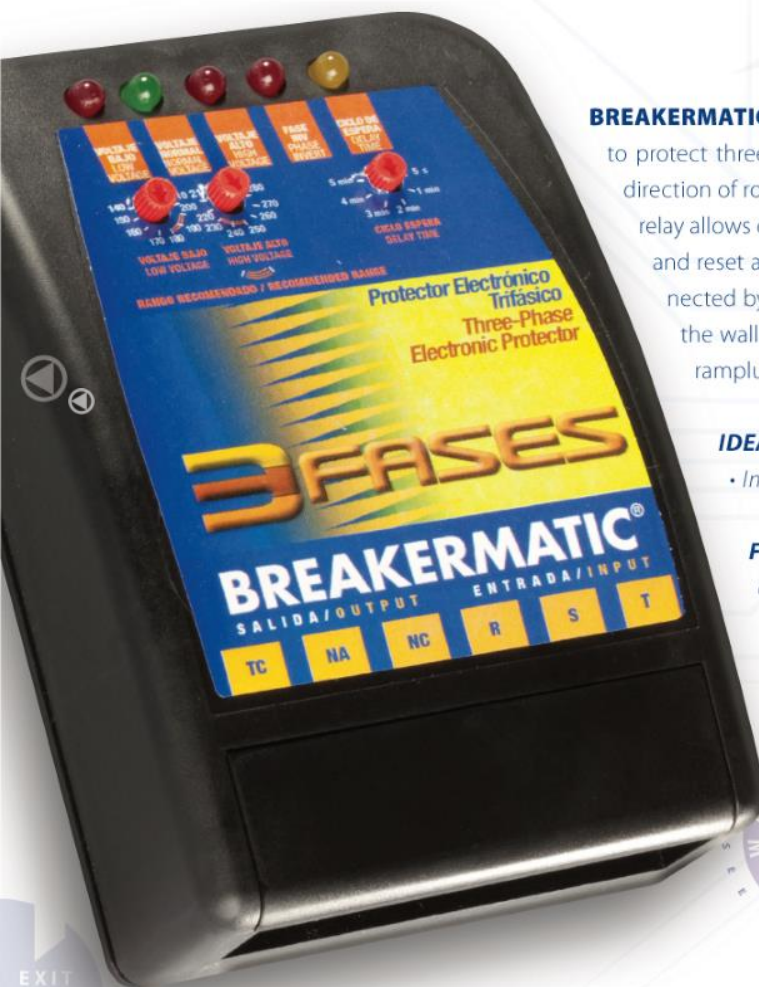


INDUSTRIAL LINE

BREAKERMATIC®

ELECTRONIC PROTECTORS FOR AIR CONDITIONERS, ENGINES, COOLING AND LIGHTING



BREAKERMATIC® 3FASES Analógico, performs the supervision of the voltages of the three-phase power line, in order to protect three-phase machines against high voltages, low voltages, blackouts, absence of a phase and reversal of the direction of rotation. It has settings to configure the disconnection voltages and the reconnection delay time. The output relay allows controlling an external contactor or any stop signal that allows stopping the machine. Disconnect operation and reset after failure are fully automatic. It has 5 LEDs that show the failures and the status of the protector. It is connected by a strip covered by a safety cover that prevents accidental contact with the terminals, and is easily fixed to the wall or to the chassis of the equipment, with a practical support that is supplied with its respective screws and ramplugs.

IDEAL FOR: • Refrigeration, air conditioning, ventilation and lighting equipment • Lifts, motors and pumps
• Industrial transportation.

FEATURESS: • Protection against: low voltage, high voltage, blackouts, absence of phase and reversal of the direction of rotation • Adjustable waiting cycle that allows the stabilization of the system and the sequencing of the load start
• 5 LED indicators that show the status of the protector • 3 Adjustment Knobs • Fully automatic operation • Installation: wiring from the power supply and to the control signal, must be carried out by qualified technical personnel.



"Click"
to see

AVAILABLE MODELS / TECHNICAL SPECIFICATIONS

INDUSTRIAL LINE BREAKERMATIC®

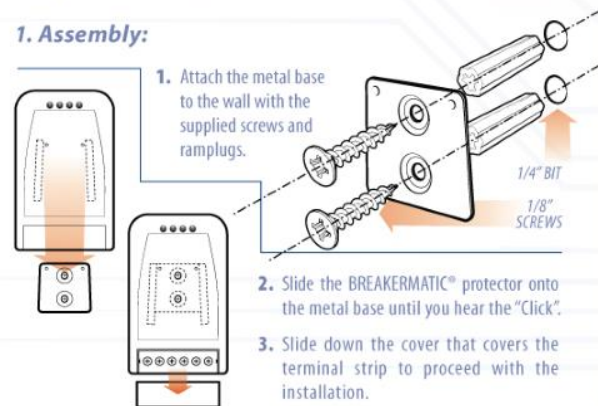
ELECTRONIC PROTECTORS FOR AIR CONDITIONERS, ENGINES, COOLING AND LIGHTING



BREAKERMATIC® 3 FASES Analógico / CONNECTION DIAGRAM:

A dry, ventilated place that allows the visualization of the panel of your BREAKERMATIC® equipment and proceed with the installation as indicated below:

1. Assembly:



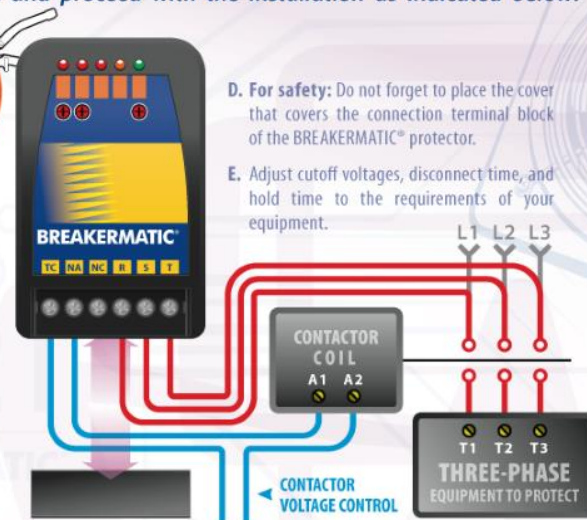
2. Preparation:

"Firmly" attach the supplied terminals to the power cables.



3. Installation:

- Identify and connect the power cables to the machine so that the machine rotates in the desired direction.
- Connect the three-phase line through a shunt to the R, S and T terminals of the protector, inverting the inputs if necessary for the Inverted Sequence Led to be off. You can use thin cables.
- Disconnect the wire from terminal A1 of the contactor coil and connect it to the TC terminal of the protector. Connect the NA terminal of the protector to the A1 terminal that was left free on the contactor coil.



D. For safety: Do not forget to place the cover that covers the connection terminal block of the BREAKERMATIC® protector.

E. Adjust cutoff voltages, disconnect time, and hold time to the requirements of your equipment.

AVAILABLE MODELS / TECHNICAL SPECIFICATIONS

Code	Nominal Voltage (VAC)	Maximum Current (Control Relay)	Disconnection Voltages	Contact Type	Ignition Delay (min / sec)	Response Time (sec)	Adjustable Voltage	Weight (g)
PTE208-A00EST *	208VAC	5A	Low V. Cut-Off: 140 - 210VAC ± 3% / High V. Cut-Off: 210 - 280VAC ± 3% *	DRY RELAY	5 - 300 ± 20% *	1.5	YES	280
PTE440-A00EST *	440VAC	5A	Low V. Cut-Off: 300 - 440VAC ± 3% / High V. Cut-Off: 440 - 580VAC ± 3% *	DRY RELAY	5 - 300 ± 20% *	1.5	YES	280
PTE480-A00EST *	480VAC	5A	Low V. Cut-Off: 340 - 480VAC ± 3% / High V. Cut-Off: 480 - 620VAC ± 3% *	DRY RELAY	5 - 300 ± 20% *	1.5	YES	280
Frequency: 60Hz.		Input Connection: 3-Contact Terminal Block		Output Connection: 3-Contact Terminal Block		Dimensions (mm): 139 x 87 x 40		

(*) Adjustable.